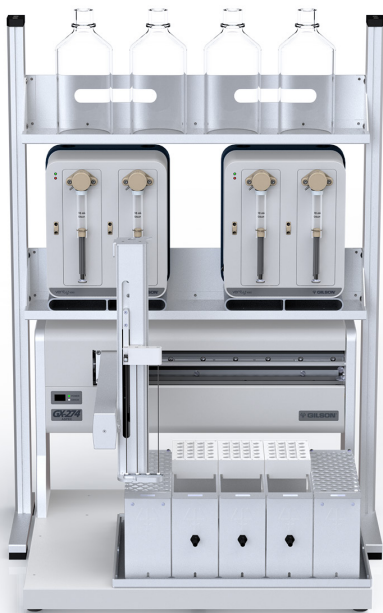




ASPEC® 274



ASPEC® 274 with System Organizer

ASPEC® 274

The ASPEC 274 is a four-probe X/Y/Z liquid handler that when paired with two ASPEC® 4260 Dual Syringe Pumps can automate liquid handling procedures and solid phase extraction procedures that use positive pressure elution for cartridge-based applications. This four-probe, four-syringe configuration allows for processing four samples simultaneously.

Documentation

The *ASPEC® Systems Documentation USB* which includes the *ASPEC® 274 User's Guide* (and other ASPEC system user's guides), plumbing diagrams, and IQ procedure documents is provided with the ASPEC 274.

ASPEC® 4260 Dual Syringe Pump

The ASPEC 4260 Syringe Pump allows for accurate aspirating and dispensing of samples and solvents. It is equipped with user-selectable syringes, valves for directing liquid from reservoir or probe or air from an external gas source, and independent pressure-sensing modules that monitor pressure on the fluid path which can be used to handle error conditions, such as high cartridge pressure or clogged liquid lines. An SPE air push can be performed on SPE cartridges using the syringe or an external gas source.

Documentation

The *ASPEC® 4060 Single and 4260 Dual Syringe Pumps User's Guide* (and other ASPEC system user's guides), plumbing diagrams, and IQ procedure documents are included on the *ASPEC® Systems Documentation USB* provided with the ASPEC 274.

Safety Shield (Optional)

Installation of a safety shield on the ASPEC 274 creates a safe working environment by preventing inadvertent contact with the X/Y/Z arm.

Safety shield installation instructions are provided in the *ASPEC® 274 User's Guide*.

Rinse Station

Probe rinsing occurs through a dedicated 4-probe rinse station capable of performing inside and outside rinses, and a flowing outside rinse when the system includes a GX Rinse Pump. An optional 4-probe rinse station with transfer ports can be used to provide access to two off-bed solvents.

GX Rinse Pump (Optional)

Integration of a GX Rinse Pump enables the option for a flowing rinse using high or low flow settings.

Setup and installation instructions for the GX Rinse Pump are provided in the *ASPEC® 274 User's Guide*.

Setup Overview

ASPEC® 274 System

Setup Overview

I UNPACK THE SYSTEM

The ASPEC 274 system is shipped in three boxes: one box contains the ASPEC 274 and its accessories and the other two boxes each contain a ASPEC 4260 Syringe Pump and its standard accessories. Other accessories (syringes, probes, racks, etc.) are packaged separately.

Locate the *ASPEC® Systems Documentation USB* that was shipped with the ASPEC 274.

II SET UP THE ASPEC 274

Set up the ASPEC 274 per the instructions provided in the *ASPEC® 274 User's Guide*, which is included on the *ASPEC® Systems Documentation USB* that was shipped with the ASPEC 274.

III SET UP ACCESSORIES

If your ASPEC 274 system includes a GX Rinse Pump or Safety Shield, setup and/or installation instructions for these accessories are provided in the *ASPEC 274 User's Guide*. System Organizer setup and installation instructions are included with the System Organizer.

IV SET UP THE ASPEC 4260 SYRINGE PUMPS

Set up the ASPEC 4260 Syringe Pumps per the instructions provided in the *ASPEC® 4060 Single and 4260 Dual Syringe Pumps User's Guide*, which is included on the *ASPEC® Systems Documentation USB* that is supplied with the ASPEC 274 System. If stacking the pumps, be sure to install the stacking bracket as instructed.

V PLUMB THE ASPEC 274 SYSTEM

After setting up the ASPEC 274 System, any accessories, and the ASPEC 4260 Syringe Pumps, plumb the system. A plumbing diagram is provided on the *ASPEC® Systems Documentation USB*. More detailed instructions are provided in the *ASPEC® 4060 Single and 4260 Dual Syringe Pumps User's Guide*, which is included on the *ASPEC® Systems Documentation USB*.

VI INSTALL TRILUTION® LH SOFTWARE

Install TRILUTION LH per the installation guide included with the software. TRILUTION LH provides control of the ASPEC 274 system.

VII START THE SYSTEM

- 1 Ensure that the GX Rinse Pump (if installed) and 4-probe rinse station with transfer ports (if installed) are connected to the ASPEC 274.
- 2 Power on the PC first, the router next, and then power on the ASPEC 274.
- 3 Power on the ASPEC 4260 Syringe Pumps.
- 4 Start TRILUTION LH.